

QUARRY SAFETY WEEK 2022

TOOL BOX TALK SERIES



TOPIC: Mobile Crushers & Screens

INTRODUCTION

Working with mobile crushing and screening plant can be hazardous to personnel. If correct precautions are not taken during operation, cleaning and maintenance, serious or fatal injuries can occur.



THE HAZARDS

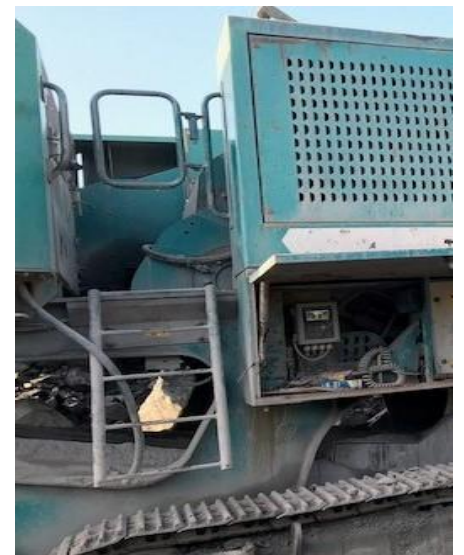
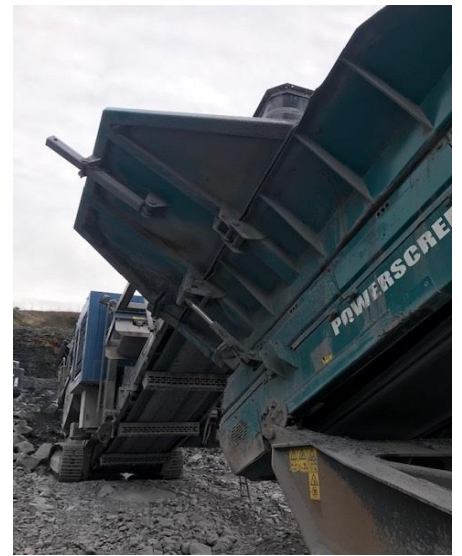
- Unexpected or accidental start-up of plant during maintenance or cleaning.
- Entanglement or crush injuries in dangerous moving parts
- Mobile plant movements
- Falls from height
- Slips, trips, falls
- Dust
- Manual handling

SAFE OPERATING PRACTICES

- Always make yourself familiar with and adhere to the Isolation Procedures and Risk Assessment control measures for the item of plant you are working on.
- Make yourself familiar with the manufacturer's instruction manual.
- Mobile crushers and screens have many moving parts. Ensure all guards are securely in place and fully protect against contact with dangerous moving parts.



- Never attempt to carry out any maintenance or cleaning operations without first following all isolation procedures to prevent accidental start-up of the plant.
- Ensure that all stored energy is dissipated prior to carrying out maintenance operations.
- Isolate any adjacent equipment that may affect the works. For example, if a conveyor is feeding a screen that is being worked on, the conveyor should also be fully isolated.
- If a blockage occurs, ensure to follow the appropriate Safe Operating Procedure for clearing blockages.
- **Never raise a suspended load above another person.**
- When manoeuvring mobile plant, employ the use of a spotter to aid the operator in positioning the plant.
- If plant is being readied for transport by folding up conveyors, etc., ensure spotters or other personnel do not enter the operating radius of any equipment to avoid crush injuries.
- The works area should be adequately lit. All operatives must wear appropriate PPE, including high visibility clothing at all times.
- Ensure all access ladders, handrails, mid-rails and toe boards are in place and in good condition. Report defects to your manager/supervisor. Use three points of contact when mounting or dismounting plant.
- Never climb on, or reach over, handrails.
- Do not expose yourself to an unprotected edge.
- The top of access ladders should be fitted with self-closing gates.
- Keep access/egress routes, catwalks and platforms clear of debris, rubbish and equipment.
- Water down works area to minimise inhalation of dust. Dust masks, eye protection and hearing protection should be worn if approaching a crusher or screen in operation.
- Spare parts and equipment for this type of plant are inherently heavy. Employ correct manual handling techniques.
- If mechanical lifting equipment is used, ensure it is fit for purpose and the safe working load is never exceeded.



REMEMBER: DO NOT carry out "The Quick Job"

STOP & THINK - ALWAYS ISOLATE

Disclaimer: This Toolbox Talk has been prepared by Dynamic Safety Solutions Ltd. Clients are reminded of the requirement to have Safe Operating Procedures as per the relevant Health & Safety Regulations. Every care has been taken to ensure that the information contained herein is correct and accurate at the date of publication. However, Dynamic Safety Solutions cannot accept any responsibility or liability for any errors, inaccuracies or omissions which may have occurred inadvertently



www.dsafetys.com



098 28489



CONSULTANCY



TRAINING



**TESTING &
CALIBRATION**



SAFETY SUPPLIES



**MANAGEMENT
SYSTEMS**