

# QUARRY SAFETY WEEK 2022

## TOOL BOX TALK SERIES



### TOPIC: Working at Height

#### INTRODUCTION

Falling from any height can result in serious injury or death. Many tasks, particularly maintenance tasks, in quarries require working at height and it is essential that a safe system of work is in place each and every time.

#### THE HAZARDS

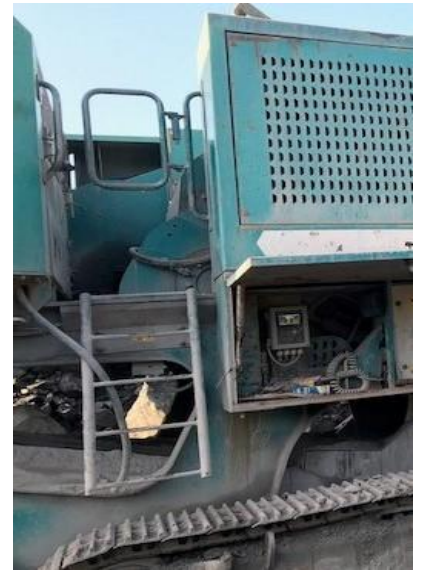
- Falls from height
- Unprotected edges
- Falling objects

#### SAFE OPERATING PRACTICES

- Always ensure that there is a safe system of work in place and that you make yourself familiar with the Risk Assessment control measures for working at height.
- Collective measures, such as a physical barrier, should be given priority over personal protective measures, i.e, platforms complete with handrails/midrails/toeboards, and adequate bunding at the top of quarry faces.



- Where the use of a post & strap system is used at the top of quarry faces during drilling and blasting, the fence must be robust enough to prevent falls from height with top and midrail protection. Erection of such a system should only be carried out after completion of a thorough risk assessment and all control measures are in place.
- Only where the use of a physical barrier creates an unacceptable risk should other measures such as harnesses be considered.
- Do not expose yourself to an unprotected edge.
- Minimize the number of personnel working at height.
- Do not climb on or reach over handrails.
- Always ensure edge protection is in good condition and adequate. Report any defects to your supervisor or manager immediately.
- The tops of all access ladders on quarry crushing and screening plant should be fitted with fall protection, preferably a gate that is self-closing.
- Always be aware of the conditions underfoot and minimise slip/trip hazards through good housekeeping by keeping platforms and catwalks clear of debris and waste.
- If working above hoppers, fill the hopper with material where possible to reduce the risk of a fall from height.
- Implement an exclusion zone underneath the works area or tether tools to minimise the risk of falling objects striking pedestrians.
- Always consider the use of a Mobile Elevated Working Platform (M.E.W.P.) if safe access/egress and a safe working platform is not available.
- Only appropriately trained operators should be permitted to operate a M.E.W.P.
- Ladders must only be used for access/egress and work of short duration. Always ensure ladders are fit for purpose and are securely tied to prevent falls from height.



## REMEMBER: NEVER Expose Yourself to an Unprotected Edge

Disclaimer: This Toolbox Talk has been prepared by Dynamic Safety Solutions Ltd. Clients are reminded of the requirement to have Safe Operating Procedures as per the relevant Health & Safety Regulations. Every care has been taken to ensure that the information contained herein is correct and accurate at the date of publication. However, Dynamic Safety Solutions cannot accept any responsibility or liability for any errors, inaccuracies or omissions which may have occurred inadvertently



[www.dsafetys.com](http://www.dsafetys.com)



098 28489



CONSULTANCY



TRAINING



TESTING &  
CALIBRATION



SAFETY SUPPLIES



MANAGEMENT  
SYSTEMS